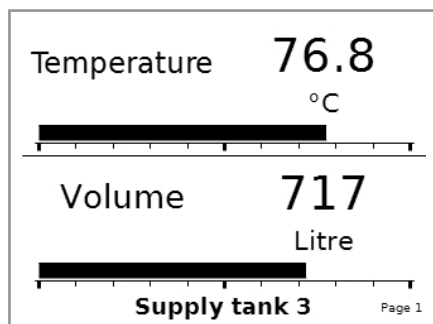
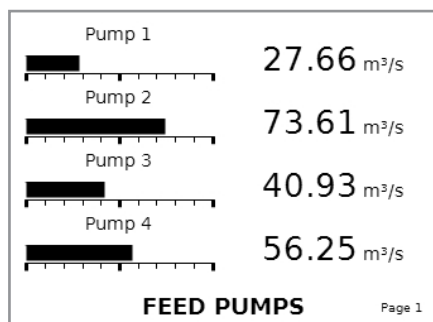


The **BA329 indicator** displays up to eight 4/20mA inputs with engineering units and tag identifications on a 7 inch backlit display which is visible in all lighting conditions. No programming is required. The BA329 is easily configured and calibrated via the front panel touch buttons using a simple intuitive menu, which will be familiar to anyone who has used a BEKA loop powered indicator. If a Configuration Table is completed when the BA329 indicator is ordered, the indicator can be supplied configured and calibrated ready for installation, for no additional charge.

**Nine different display formats** allow one, two, four or eight variables to be shown together on a screen.



Each variable can be individually scaled and displayed with its units of measurement and tag identification.



**International intrinsic safety certification** allows the BA329 indicator to be installed in Zones 0, 1, 2, 20, 21 or 22 throughout the world. Each of the eight 4/20mA inputs is galvanically isolated, and complies with the requirements for simple apparatus. This, combined with the low voltage drop, allows each input to be connected in series with most intrinsically safe 4/20mA loops with minimal documentation.

**Both BA329 models are powered** from a BEKA Power Isolator located in a safe area, or in Zone 2 with IP54 protection. The BA212 Power Isolator should be used for applications in IIB or IIA gases, or in dust atmospheres. It is also suitable for IIC gas applications when the BA329 indicator and the isolator are close together. Where greater separation in a IIC gas application is required, the BA243 Power Isolator and BA3901 Power Combiner should be used.

**For applications in a Ex e or Ex t enclosure** the BA329-PC front panel has certified Ex e and Ex t compliant impact and ingress protection. When correctly installed in an Ex e or Ex t apparatus certified enclosure, the BA329-PC does not invalidate the enclosure's certification.

**The stainless steel front panel** is completely flat and easy to clean. The front of both models have certified IP66 protection for the indicator and the joint between the indicator and the panel in which it is mounted. Both models are suitable for installation in areas that are regularly washed or hosed down. The BA329-GL features a toughened glass display window, and the BA329-PC has an impact resistant polycarbonate window with a hard, scratch resistant outer surface.

# BA329-GL BA329-PC

## 8 input 4/20mA indicator

*Intrinsically safe for use in  
Zone 0, 1, 2, 20, 21 or 22*

- ◆ No programming required.
  - ◆ Simple calibration via front panel touch buttons.
  - ◆ Ex ia international intrinsic safety certification.
  - ◆ 1 to 8 variables per screen including bargraphs, units of measurement and tags.
  - ◆ 7 inch backlit screen visible in all lighting conditions.
  - ◆ IP66 stainless steel front panel:
    - BA329-GL Toughened glass window.
    - BA329-PC Impact resistant window for installation in an Ex e or Ex t enclosure.
  - ◆ 3 year guarantee
- [www.beka.co.uk/ba329](http://www.beka.co.uk/ba329)



# BEKA

## associates

BEKA associates Ltd. Old Charlton Rd.  
Hitchin, Hertfordshire, SG5 2DA, U.K.  
Tel. (0) 1462 438301 e-mail [sales@beka.co.uk](mailto:sales@beka.co.uk)  
website: [www.beka.co.uk](http://www.beka.co.uk)

## SPECIFICATION

### Power supply

#### BA329

Voltage	7.5V min via a BA212 or BA243 Power Isolator.
Current	280mA at 7.5V

### Display

Type	FSTN Liquid crystal
Size diagonal	178mm (7 inch)
Resolution	320 x 240 pixels
Backlight	White

### Touch buttons

Type	Projected capacitance 8 each with a red, amber and green backlight annunciator.
------	--

### Inputs

For each of the eight galvanically isolated input channels

Current	4/20mA
Voltage drop	Less than 1.2V at 20°C Less than 1.3V at -40°C
Overrange	±200mA or ±30V will not cause damage.
Isolation	500V to other inputs and the supply

### Accuracy

At 20°C	±0.02%
Temperature effect on:	
Zero	Less than 25ppm
Span	Less than 50ppm
Series mode rejection	Less than 0.05% error for 1mA pk to pk 50 or 60Hz interference.

### Safety certification

#### International IECEx

Code	Ex ia IIC T4 Ga Ex ia IIIC T135°C Da -40°C ≤ Ta ≤ 65°C
------	--

Safety parameters for each 4/20mA input channel

Input	
Ui	30V dc
Ii	200mA
Pi	0.84W
Output	Complies with the requirements for simple apparatus.

Cert. Nos.	IECEX CML 20.0150X IECEX CML 20.0152X IECEX CML 21.0101X
------------	--

#### Europe ATEX and UK UKCA

Code	II 1G Ex ia IIC T4 Ga II 1D Ex ia IIIC T135°C Da -40°C ≤ Ta ≤ 65°C
------	--

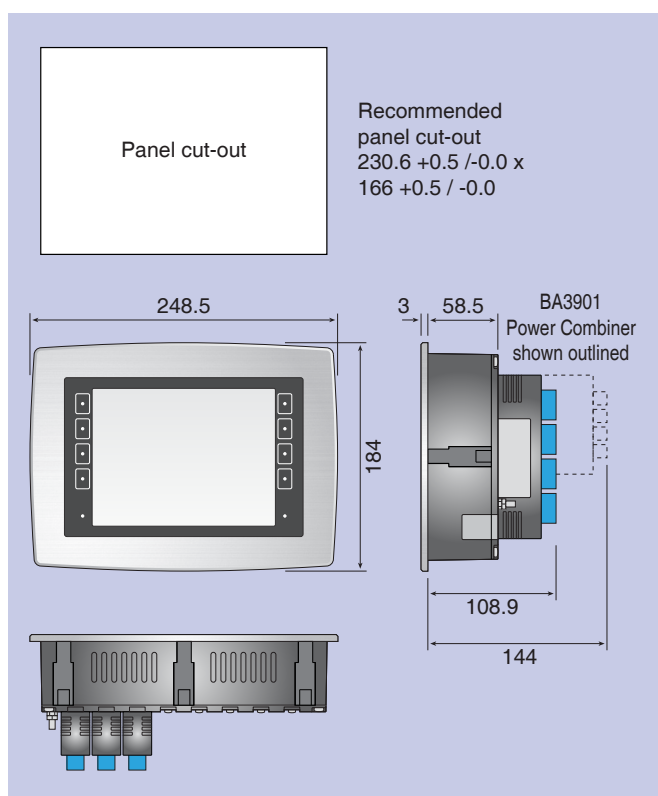
Safety parameters for each input channel as IECEx

Cert. Nos.	CML 20ATEX2252X CML 20ATEX2254X CML 21ATEX2830X CML 21UKEX2003X 21UKEX2005X CML 21UKEX2831X
------------	--

### Environmental

Operating temp	-40 to +65°C display -20 to +65°C
Storage temp	-40 to +85°C
Humidity	To 95% at 40°C non-condensing
EMC	Complies with UK & European EMC Directive.

## DIMENSIONS (mm)



### Mechanical

#### Enclosure

Front bezel	316 stainless steel
BA329-GL window	Toughened glass
BA329-PC window	Polycarbonate with scratch resistant coating. Certified for installation in Ex e and Ex t enclosures
Sides & rear	Noryl flame class rating UL94V-1
Ingress protection	
Front	IP66
Rear	IP20
Weight	1.8kg

## HOW TO ORDER

For intrinsic safety applications.

#### Please specify

BA329-GL indicator  
Plus BA212 Power Isolator for IIB, IIA gas or dust applications.  
or BA243 Power Isolator & BA3901 Power Combiner for IIC gas applications.

For intrinsic safety applications in an Ex e or Ex t enclosure.

BA329-PC indicator  
Plus BA212 Power Isolator for IIB, IIA gas or dust applications.  
or BA243 Power Isolator & BA3901 Power Combiner for IIC gas applications.

Calibration

Both models can be supplied calibrated with units of measurement and tag information for no additional charge. If required, please complete the Configuration Table which will be supplied with your order acknowledgement. If calibration information is not specified the BA329 will be supplied with default calibration, but can easily be calibrated on-site via the front panel touch buttons.